

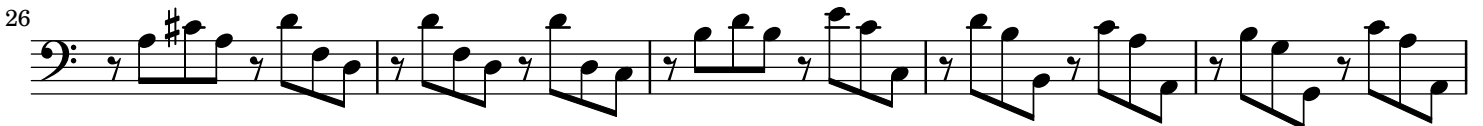
# L'Estro Armonico

## Concerto VI (RV 356)

### Cello

Antonio Vivaldi  
Op.3 No.6

Allegro



Musical score for Cello, measures 41-76. The score is written in bass clef with a key signature of one sharp (F#). The music consists of a continuous melodic line with various rhythmic patterns, including eighth and sixteenth notes, and rests. Measure 46 features a flat (b) on the eighth note of the first half. Measure 76 ends with a double bar line and a fermata over the final note.

Largo

TACET

14

Musical notation for TACET 14, showing a bass clef, a common time signature (C), and a double bar line.

Presto

Musical score for Cello, measures 4 to 136. The score is written in bass clef with a 2/4 time signature. It includes dynamic markings such as *p* (piano) and *f* (forte). The piece is marked *Presto*. The score consists of 13 measures per line, with line numbers 4, 10, 20, 30, 40, 50, 60, 70, 82, 94, 103, 114, 125, and 136. The key signature has one sharp (F#).