

Sinfonia No.6

(G 506)

„La Casa del Diavolo”

Luigi Boccherini, 1771
hrsg. von Antonio de Almeida

I

Andante sostenuto

9

f e staccato

1

3

15

30

Allegro assai

f

36

42

48

59

64

sf

sf

77

7

f

6

f

4

3

Corno I

2

85

93

99

105

125

131

137

143

148

159

164

177

p

3

f

f

VI.I

15

1

p

6

f

sf

sf

8

7

Andante sostenuto

6

f e staccato

1

13

3

30

Allegro con molto

ob.1

7

f

4

muta in F

#d.

46

VI.I
in F

6

2

3

51

56

61

66

sf

sf

Corno I

4

71

6 *f* 1 *p cresc.*

83

90

97

104

111

118

127

136

142

Ob.1 8 1 *f*

157

164

Detailed description of the musical score: The score is for the first horn (Corno I) and spans measures 71 to 164. It is written in a single system with 12 staves. The key signature has one flat (B-flat), and the time signature is 4/4. The music begins at measure 71 with a dynamic of *f* and a fingering of 6. It features various rhythmic patterns, including eighth and sixteenth notes, and rests. Dynamics fluctuate, including *p cresc.* at measure 83, *sf* at measures 104 and 111, and *f* at measures 127 and 142. Fingerings of 1 and 3 are frequently used. A breath mark of 8 is placed above the staff at measure 142, with an *Ob.1* part written above it. The score concludes at measure 164.

Corno I

171



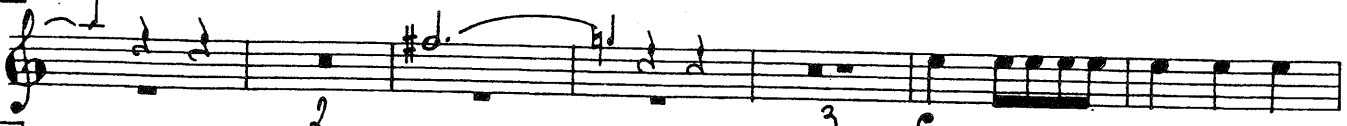
176



182



196



206



212



225



232



238



244



250



255

